

## System EW - line flex Flexible Systemabgasanlage

CODE	ITEM DESCRIPTION	Ø / Price (€)										
		Ø 80	Ø 100	Ø 110	Ø 115	Ø 120	Ø 130	Ø 140	Ø 150	Ø 160	Ø 180	Ø 200
<b>STRAIGHT PIPE ELEMENT</b>												
f 02	Flexible pipe element (WS= 0,12 mm, l = 1 m)											
f 02r	Flexible pipe coil (WS= 0,12 mm, l = 15 m)											
f 02r	Flexible pipe coil (WS= 0,12 mm, l = 18 m)											
f 02r	Flexible pipe coil (WS= 0,12 mm, l = 20 m)											
f 02r	Flexible pipe coil (WS= 0,12 mm, l = 25 m)											
f 02r	Flexible pipe coil (WS= 0,12 mm, l = 50 m)											
f 01	Flexible pipe element (WS= 0,24 mm, l = 1 m)											
f 01r	Flexible pipe coil (WS= 0,24 mm, l = 18 m)											
f 01r	Flexible pipe coil (WS= 0,24 mm, l = 30 m)											
f 01r	Flexible pipe coil (WS= 0,24 mm, l = 50 m)											
		Ø 80	Ø 100	Ø 110	Ø 115	Ø 120	Ø 130	Ø 140	Ø 150	Ø 160	Ø 180	Ø 200
fd 06	Adaptor flexible - flexible tubing											
fd 07	Adaptor flexible - rigid tubing											
fd 08	Adaptor rigid - flexible tubing											
fd 60	Special sealing component for flex in pos. pres. mode											

The system Line Flex can be supplemented with the construction units of the systems ew-fu and / or al-bi.

## System EW - las 0,6 mm

CODE	ITEM DESCRIPTION	Ø 115	Ø 120	Ø 130	Ø 140	Ø 150	Ø 160	Ø 180	Ø 200
las 07	Pressurisation element with clean-out-opening								
las 15	Pipe tee 87° for connection to concentric piping								
las 49	Pipe tee „klix“ for connection to concentric piping								
las 25	End cap for LAS								

The system EW - las can be combined with basic elements of system EW - fu.

 P < 0 Pa  
  P > 0 Pa  
  0,12 mm  
  0,24 mm  
  GUARANTEE 10 YEARS  
 O,G,F  
 200 Pa  
 400°C

Ø / Price (€)

CODE	Ø 225	Ø 250				
------	-------	-------	--	--	--	--

**STRAIGHT PIPE ELEMENT**

f 02						
f 02r						
f 02r						
f 02r						
f 02r						
f 02r						
f 02r						
f 01						
f 01r						
f 01r						
f 01r						



f 02



f 01

	Ø 225	Ø 250				
fd 06						
fd 07						
fd 08						
fd 60						



fd 06



fd 07



fd 08



fd 60

 P < 0 Pa  
  0,6 mm  
  GUARANTEE 10 YEARS  
 OIL GAS  
 200°C

0,6

CODE	Ø 225	Ø 250	Ø 300
las 07			
las 15			
las 49			
las 25			



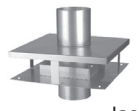
las 07



las 15



las 49



las 25